



Your business in mind.



SAGE MAS 500

ADVANCED MANUFACTURING

BUSINESS INSIGHTS

Sage MAS 500 takes inquiry, drill-down, monitoring, and data analysis to a whole new level with out-of-the-box business intelligence tools, including Business Insights Analyzer, Business Insights Explorer, Alerts, Crystal Reports®, Web Reports, and integration with desktop productivity tools.

REPORTING FEATURES

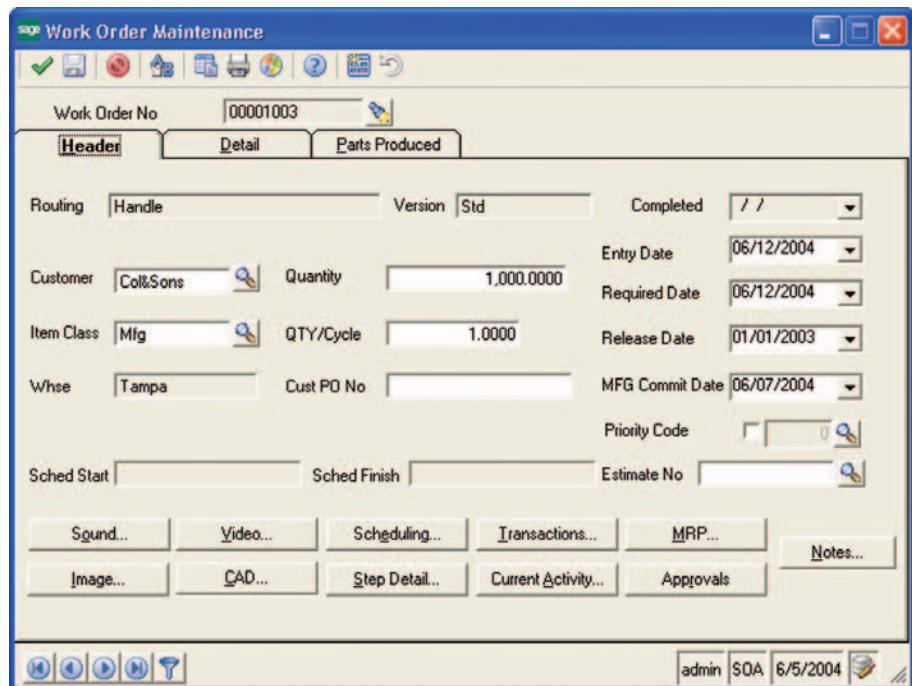
- Maintain custom form layouts for printed forms.
- Tailor forms to your organization's design requirements.
- Export any report data to an external file. Data types supported include ASCII text, delimited, Excel, XML, PDF, HTML, RTF, or Microsoft Word.
- Output any report to the screen, a printer or a variety of file formats.
- Create customized, presentation-quality reports through Crystal Reports software.

REPORTS

- Work Order Completion
- Work Order Printing
- Open WIP
- Job Costing
- WIP Costing
- Labor Efficiency
- Downtime
- Scrap
- Shipment Status (Outside Processing)
- Employee List
- Downtime List
- Scrap List
- Break Time List
- Work Order Status
- Current Activity

SAGE MAS 500 SOLUTIONS

- CRM and E-business
- Financials and Project Accounting
- Distribution and Manufacturing
- Human Resources and Payroll
- Customization and Integration
- Business Intelligence



Advanced Manufacturing Features Provide the Backbone for Production Tracking and Job Costing

The Sage MAS 500 ERP Advanced Manufacturing module includes all of the functionality of the Light Manufacturing/Advanced Kitting module as well as enhanced work orders and labor and production reporting.

The system provides shop floor visibility to your entire enterprise. With a few mouse-clicks customer service can quickly view the status of a customer order without having to interrupt the shop supervisor. Advanced Manufacturing provides instant visibility to see which employees are currently on the clock in any production facility.

The GAAP-compliant job costing system helps you identify which manufactured items are generating the most profit and which items are costing you money. You will be able to identify production bottlenecks and respond in real time to last-minute engineering changes and high-priority orders.

Businesses define operations, machines, work centers, and other options based on their needs as opposed to pre-defined options. This allows you to tailor Advanced Manufacturing to your unique manufacturing environment and corporate business model.

Advanced Manufacturing is especially well suited for assembly, electronics, metal fabrication, machine/equipment manufacturing, and other production environments where work order tracking and labor reporting are essential requirements.

