



## SAGE MAS 500

## ADVANCED PLANNING AND SCHEDULING

### BUSINESS INSIGHTS

Sage MAS 500 takes inquiry, drill-down, monitoring, and data analysis to a whole new level with out-of-the-box business intelligence tools, including Business Insights Analyzer, Business Insights Explorer, Alerts, Crystal Reports®, Web Reports, and integration with desktop productivity tools.

### REPORTING FEATURES

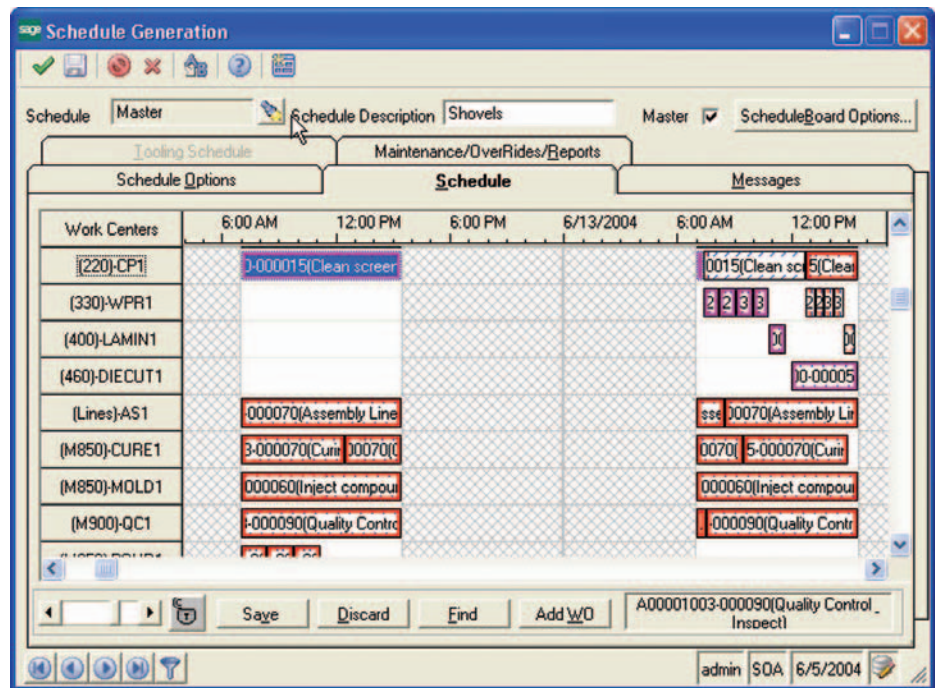
- Maintain custom form layouts for printed forms.
- Tailor forms to your organization's design requirements.
- Export all report data to an external file. Data types supported include ASCII text, delimited, Excel, XML, PDF, HTML, RTF, or Microsoft Word.
- Output any report to the screen, a printer, or a variety of file formats.
- Create customized, presentation-quality reports through Crystal Reports software.

### REPORTS

- Work Order Priority
- Work Order Schedule
- Work Center Schedule
- Tool Schedule
- Work Center Utilization
- Machine Utilization
- Late Scheduled Work Orders
- Schedule Exception Message
- Facility List
- Tool Machine List
- Tool List
- Work Center Schedule List
- Machine Schedule List
- Holiday Schedule List

### SAGE MAS 500 SOLUTIONS

- CRM and E-business
- Financials and Project Accounting
- Distribution and Manufacturing
- Human Resources and Payroll
- Customization and Integration
- Business Intelligence



### Manage Production and Resources Using Advanced Scheduling Rules and the Simple Drag-and-Drop Schedule Board

Do you have problems scheduling production and managing resources? Are orders late because someone forgot to schedule an operation? Did you ever lose a good customer because production fell behind their required deadline?

Sage MAS 500 ERP includes one of the most powerful and easy-to-use Advanced Planning and Scheduling (APS) modules available today. This module uses industry-standard scheduling rules to automatically schedule production based on advanced algorithms and mathematical calculations.

System-generated schedules provide a great foundation but do not take into consideration real-world concerns. That's why the APS module includes a drag-and-drop schedule board.

The schedule board displays all system-generated operation schedules, and it allows supervisors or production scheduling personnel to tweak the schedule to fit in high-priority orders or to move scheduled operations to a different machine when another breaks down.

APS provides company-wide visibility for production schedules. Your customer service, management, sales, and other employees have online access to view the status of each customer order. It provides customer service with tools to quickly find scheduled completion dates across manufacturing facilities.

