



SAGE MAS 500

AVAILABLE MODULES

FINANCIALS

- General Ledger
- Accounts Receivable
- Accounts Payable
- Advanced Consolidations
- Allocations
- Cash Management
- FAS Asset Accounting
- FAS Asset Inventory
- Multicurrency Management

PROJECT ACCOUNTING

- Project Accounting
- eTimesheets
- Microsoft Project Link

MANUFACTURING

- Light Manufacturing
- Advanced Manufacturing
- Advanced Planning and Scheduling
- Engineering Change Management
- Estimating
- Project Management
- Material Requirements Planning (MRP)
- Product Configurator
- Shop Floor Control

SAGE MAS 500 SOLUTIONS

- CRM and E-business
- Financials and Project Accounting
- Distribution and Manufacturing
- Human Resources and Payroll
- Customization and Integration
- Business Intelligence

DISTRIBUTION

- Inventory Management
- Inventory Replenishment
- Purchase Order
- Sales Order
- eOrder
- Warehouse Management
- Advanced Kitting

HUMAN RESOURCES AND PAYROLL

- Abra Attendance
- Abra HR
- Abra Payroll

CRM

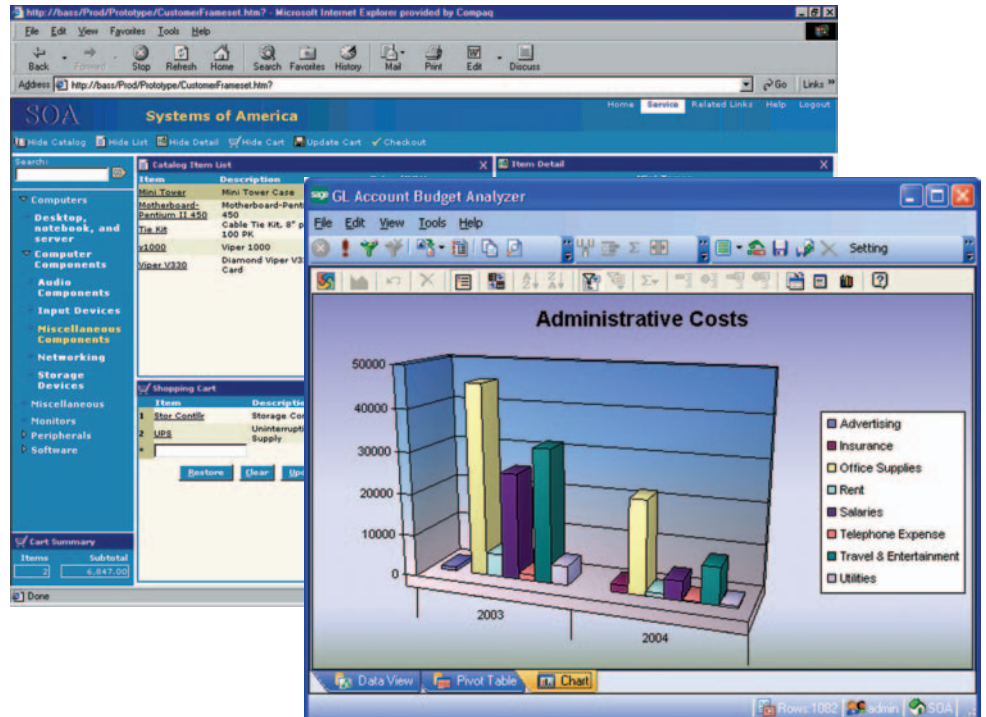
- eCustomer
- eSalesforce
- Sage CRM SalesLogix Sales
- Sage CRM SalesLogix Support

BUSINESS INTELLIGENCE AND REPORTING

- Alerts
- eExecutive
- DataPorter
- Business Insights Explorer
- Business Insights Analyzer
- Crystal Reports®
- Web Reports

CUSTOMIZATION

- Application Framework
- Customizer
- Source Code



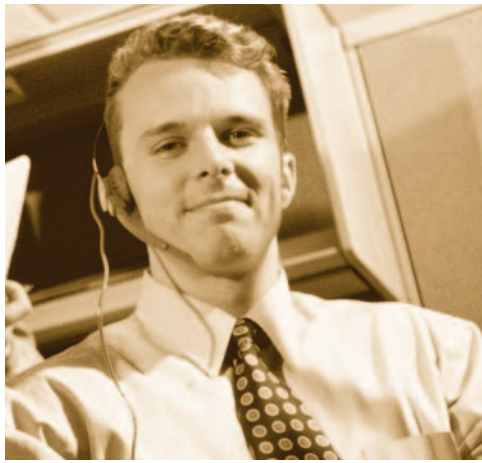
Improve business-to-business customer service through the Internet with the Sage MAS 500 eCustomer module (top screen). The Business Insights Analyzer module (lower screen) keeps you in charge of your business by channeling all the information you need into a powerful inquiry and analysis system.

Sage MAS 500 ERP is a highly reliable, robust and integrated series of enterprise applications covering all areas of business, including financials, distribution, customer relationship management (CRM), manufacturing, human resources, payroll, project accounting, financial reporting, electronic commerce, and more.

The products are designed exclusively for companies and leverages Microsoft tools, technology, and architecture to provide a flexible, scalable, and full-featured enterprise management solution.

Sage MAS 500 offers market-leading functionality in a variety of areas. Its distribution capabilities are extensive, supporting multiple warehouses, forecasting, and automated procurement. The outstanding manufacturing capabilities include routings, bills of material, work orders, MRP, scheduling, job costing, and labor reporting. An out-of-the-box customer self-service application gets businesses up and running quickly with an integrated, powerful Web site for order taking and account inquiries.

In addition, the Sage MAS 500 design integrates with other applications, including Web sites and e-commerce applications, allowing customers to fully support their e-business plans with Sage MAS 500. These strengths combine with many others to provide a complete accounting and business solution.



"The system is sweet. It gives us exactly what we need right now. But it's also scalable, and will grow as we do. If we move into the business-to-consumer market, or if we want to add enhancements like barcoding to our operations, we will be able to expand using our existing IT resources - which is wonderful."

Carmel A. Cooke

CFO

Affy Tapple, LLC

Financials

Sage MAS 500 offers deep financial functionality and superior usability. Integration of multiple processes, easy access, data error reduction and streamlined customization are only a few of the benefits of Sage MAS 500 financial software. Integration with Microsoft Office, BackOffice, and the Internet, combined with its exclusive optimization for the Windows and SQL Server platform, makes it an ideal solution for the ever-changing needs of today's growing businesses. The Sage MAS 500 Financials module includes: General Ledger, Accounts Receivable, Accounts Payable, Purchase Order, Multicurrency Management, Cash Management, FAS Asset Accounting, FAS Asset Inventory, Advanced Consolidations, Allocations, and Financial Reporting.

These modules can improve your cash flow, customer satisfaction, and access to up-to-the-minute data. They also offer a way to streamline your accounting processes, save time, increase the integrity of your data, and provide the means for instant analysis and presentation-quality reporting on a host of important issues that affect your decision-making and profitability. The modules provide extensive benefits and are fully integrated with the other Sage MAS 500 modular solutions.

Project Accounting

Effective project management enables professional services firms and corporate IT departments to achieve operational excellence through the unique ability to control people, projects, and budgets with exceptional flexibility. The result helps generate more revenue at a lower cost, eliminate wasted hours, and produces more bottom-line savings.

The Sage MAS 500 Project Accounting module allows project managers to optimize project profitability. Project managers can track actual vs. estimated costs through forecast completion, which helps prevent cost overruns and generates bottom-line savings. Project Accounting also integrates Microsoft Project Link, providing managers and finance departments an end-to-end project management solution. The Sage Timesheet module is a browser-based time and expense entry and project cost management module that connects a remote workforce through the Internet in real-time.

Distribution

In today's distribution environment, many factors can jeopardize your profitability. Optimizing inventory levels can mean the difference between improving profits and going out of business. The Sage MAS 500 Distribution solution is an integrated series of modules designed to give you everything you need to control your inventory levels—and their effect on your profits. Incorporating Inventory Management, Warehouse Management, Sales Order, eOrder, Purchase Order, Advanced Kitting, Inventory Management, and Inventory Replenishment modules, you can customize your software system to fit your specific requirements. Accurately forecasting and managing for every eventuality, the Distribution is ideal for distributors with multiple warehouses in a variety of industries.

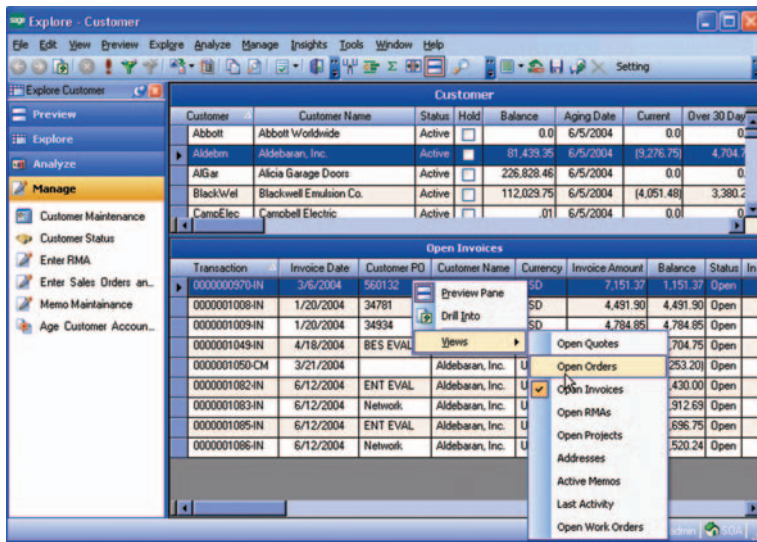
Designed by distribution experts, Distribution can ensure on-time delivery to your important customers, maximize your productivity, and deliver advanced capabilities for tracking, managing, and replenishing inventory throughout the entire distribution cycle—from automated purchasing to stocking, all the way through to sales. With an eye on improving your profitability, the system helps you reduce carrying costs, maximize cash flow, and enables you to buy smarter.

Manufacturing

The Sage MAS 500 Manufacturing solution was designed with the flexibility and expanded capabilities to handle unique business requirements for various industries, including metal fabrication, machine and equipment manufacturing, electronic or electric equipment assembly, high-tech products, stamping, injection molding, furniture and fixture production, wood products manufacturing, and more.

Fully integrated modules can help you optimize your processes and secure your profit margin by tying manufacturing data back to the core financial modules that serve as the base of the Sage MAS 500 system. Manufacturing modules consist of Advanced Manufacturing, Light Manufacturing, Material Requirements Planning (MRP), Estimating, Engineering Change Management, Shop Floor Control, Advanced Planning and Scheduling, Product Configurator, and Project Management.

Sage MAS 500's comprehensive Business Intelligence tools puts the data at your fingertips.



The screenshot displays the Sage MAS 500 software interface. The top window is titled 'Explore - Customer' and contains a menu bar (File, Edit, View, Preview, Explore, Analyze, Manage, Insights, Tools, Window, Help) and a toolbar. Below the menu is a 'Customer' table with columns: Customer, Customer Name, Status, Hold, Balance, Aging Date, Curren, and Over 30 Day. The table lists several customers, including Abbott Worldwide, Aldebaran, Inc., Alicia Garage Doors, Blackwell Emulsion Co., and Carrobell Electric. Below this is an 'Open Invoices' table with columns: Transaction, Invoice Date, Customer PO, Customer Name, Currency, Invoice Amount, Balance, Status, and In. A context menu is open over the 'Open Invoices' table, showing options like 'Open Quotes', 'Open Orders', 'Open Invoices', 'Open RMAs', 'Open Projects', 'Addresses', 'Active Memos', 'Last Activity', and 'Open Work Orders'.

Customer	Customer Name	Status	Hold	Balance	Aging Date	Curren	Over 30 Day
Abbott	Abbott Worldwide	Active	<input type="checkbox"/>	0.0	6/5/2004	0.0	0
Aldebar	Aldebaran, Inc.	Active	<input type="checkbox"/>	81,439.35	6/5/2004	(9,278.75)	4,704.7
ALGAR	Alicia Garage Doors	Active	<input type="checkbox"/>	226,828.46	6/5/2004	0.0	0
BlackWel	Blackwell Emulsion Co.	Active	<input type="checkbox"/>	112,029.75	6/5/2004	(4,051.48)	3,380.2
CarroElec	Carrobell Electric	Active	<input type="checkbox"/>	.01	6/5/2004	0.0	0

Transaction	Invoice Date	Customer PO	Customer Name	Currency	Invoice Amount	Balance	Status	In
0000000970-IN	3/6/2004	560132	Aldebaran, Inc.	SD	7,151.37	1,151.37	Open	In
0000001008-IN	1/20/2004	34781	Aldebaran, Inc.	SD	4,491.90	4,491.90	Open	In
0000001009-IN	1/20/2004	34934	Aldebaran, Inc.	SD	4,784.85	4,784.85	Open	In
0000001049-IN	4/18/2004	BES EVAL	Aldebaran, Inc.	U		704.75	Open	In
0000001050-CM	3/21/2004		Aldebaran, Inc.	U		253.20	Open	In
0000001082-IN	6/12/2004	ENT EVAL	Aldebaran, Inc.	U		430.00	Open	In
0000001083-IN	6/12/2004	Network	Aldebaran, Inc.	U		912.69	Open	In
0000001085-IN	6/12/2004	ENT EVAL	Aldebaran, Inc.	U		696.75	Open	In
0000001086-IN	6/12/2004	Network	Aldebaran, Inc.	U		520.24	Open	In



"Sage MAS 500 is an excellent product with great functionality. All the modules integrate in a logical progression that makes a lot of sense to an accounting professional."

Shawn Burke

Assistant Controller

Captivate Network, Inc.

The manufacturing solution offers streamlined integration of routings and bills of material, which enable improved lead time calculations, more accurate material plans, and better resource allocation. The solution gives a real-time business snapshot, a critical competitive advantage that provides manufacturers with the ability to ship more products on time to their customers, making it the clear choice for manufacturing management.

HR and Payroll

Sage MAS 500 HR and Payroll delivers a powerful, yet flexible, enterprise-wide HR solution for managing employee and business relationships, and overseeing the processes related to government compliance requirements and certifications. The modules offered include Abra HR, Abra Payroll, and Abra Attendance, which smoothly integrate HR and payroll information with the many facets of your business operations.

CRM

Sage MAS 500 provides the tools to better understand your customer, close more deals, and help you profit from the relationship. By giving complete customer information to sales and support people, requests and leads from customers are managed effectively and accurately. By automating key activities, providing essential analytical tools, streamlining your company's communications, and managing intelligence, you can attain new levels of efficiency with benefits that range from improved employee teamwork and more satisfied customers to a shorter sales cycle, more sales revenue, and higher profitability.

Business Intelligence and Reporting

Sage MAS 500 provides other valuable system components that can offer substantial benefits in running your business by enabling you to monitor key performance indicators efficiently and effectively. Sage MAS 500 Alerts is one of the most popular Sage MAS 500 modules. By sending e-mail notifications to you and your specified personnel when something significant happens in your business, Alerts can solve problems before they start and help you satisfy your customers far more consistently. Alerts uses standard or customizable early warning messages that announce critical events in your Sage MAS 500 system, including credit holds, inventory thresholds, priority client transactions, urgency levels, and more.

The eExecutive module is included as standard with Sage MAS 500, and offers busy executives a customizable, Web-based, real-time overview of vital business operations as well as user-defined key performance indicators. Using the data available in Sage MAS 500, your firm's senior staff can make better business-critical decisions in any environment with up-to-the-minute information.

